

Ines Garcia

Height: 174
Hair: Brown

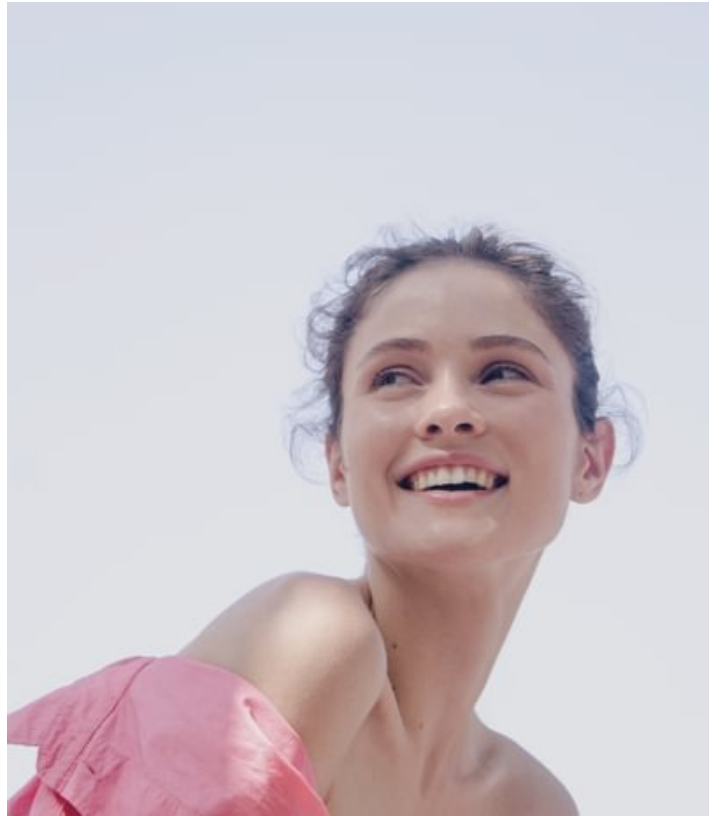
Dress: 36
Eyes: Green

Bust: 81
international

Taille: 61

Hips: 89

Shoe: 39,5



The cover of Paris Capitale magazine features a woman in a white t-shirt and a dark blue jacket. The text on the cover includes:

PARIS
CAPITALE

HOMMAGE
Carl Lagerfeld
interview capitale

PARIS GUIDE
IN ENGLISH
P. 115

MODE
ART &
LUXE

SAVE THE DATE
Art Paris Art Fair
Salon du dessin

DÉCOUVERTE
Le nouveau visage
du quartier Verbot

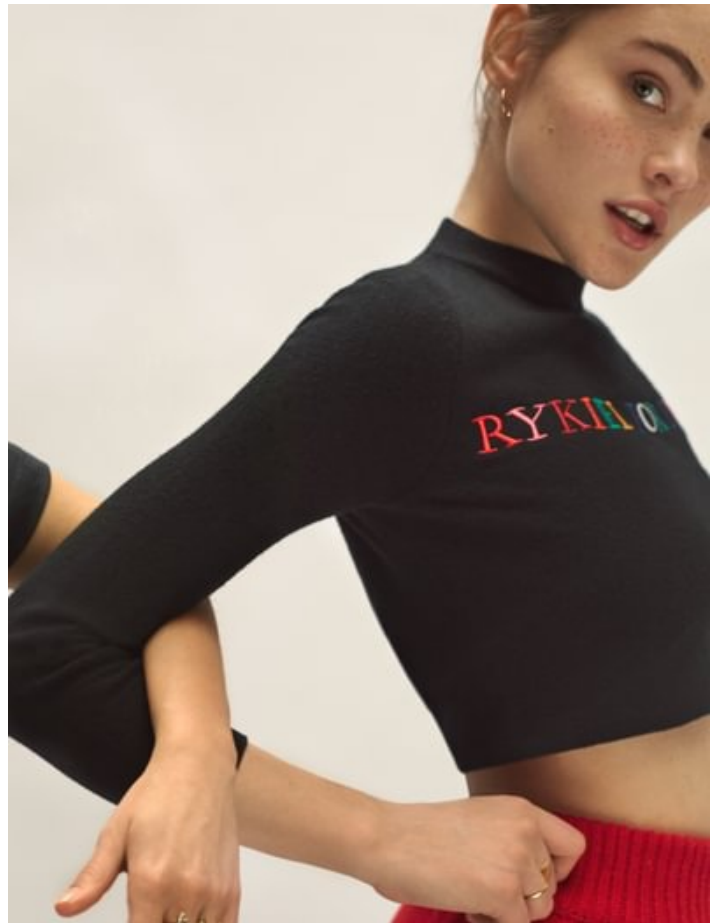
OÙ SORTIR ?
Nos plus belles

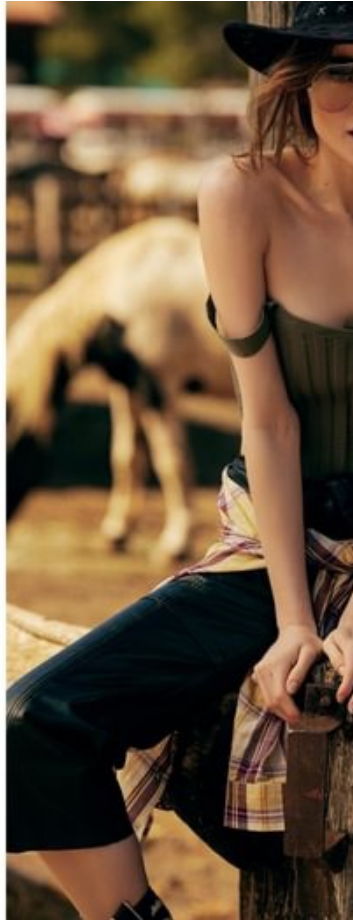
www.pariscapitale.com

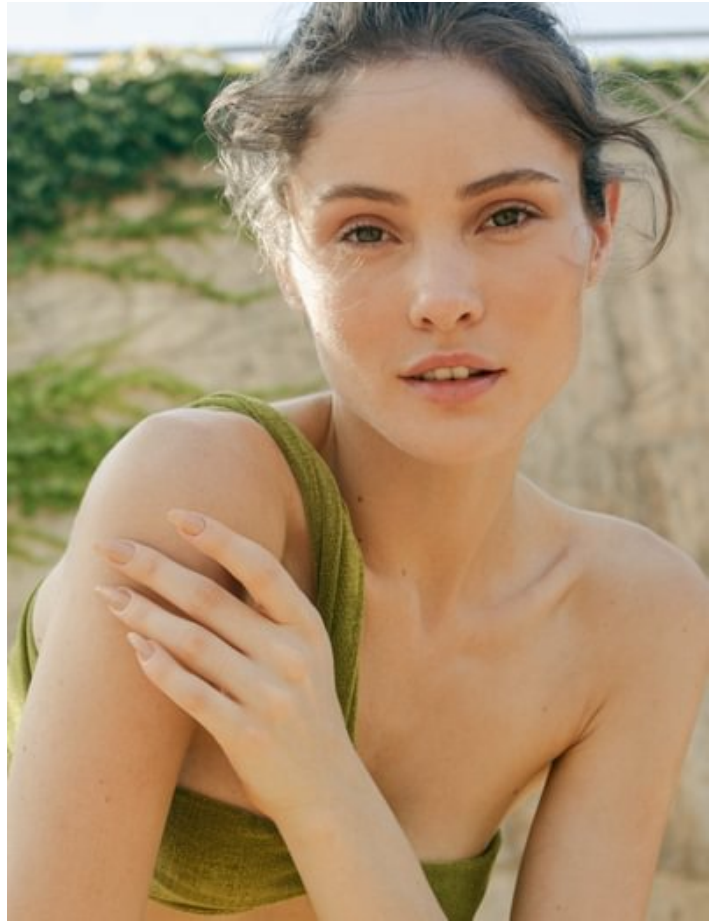


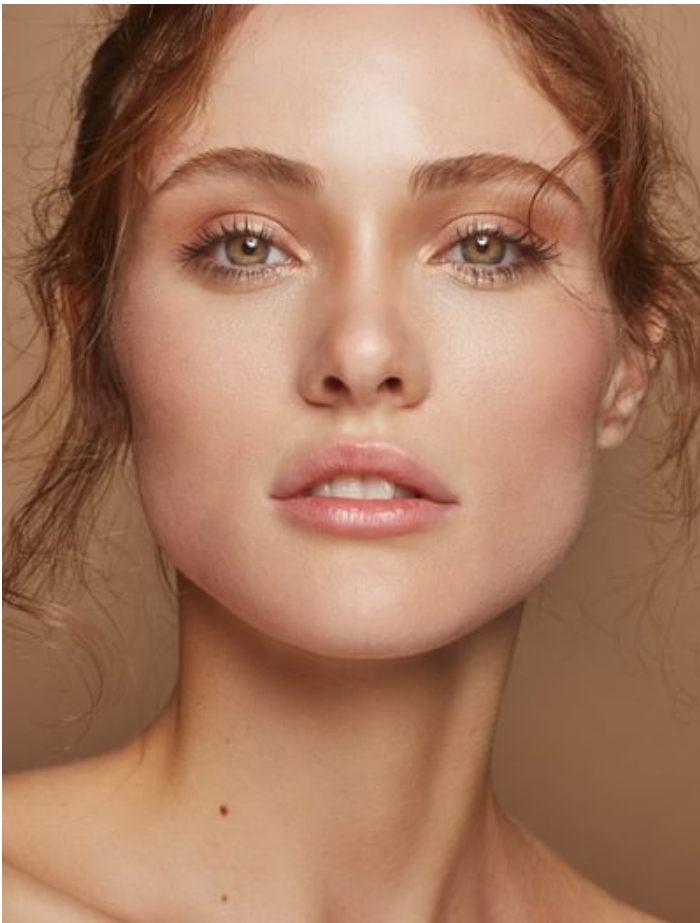
Robe en coton
perforé. Giambà.
Boucles d'oreilles.
Caroline Rajmán.





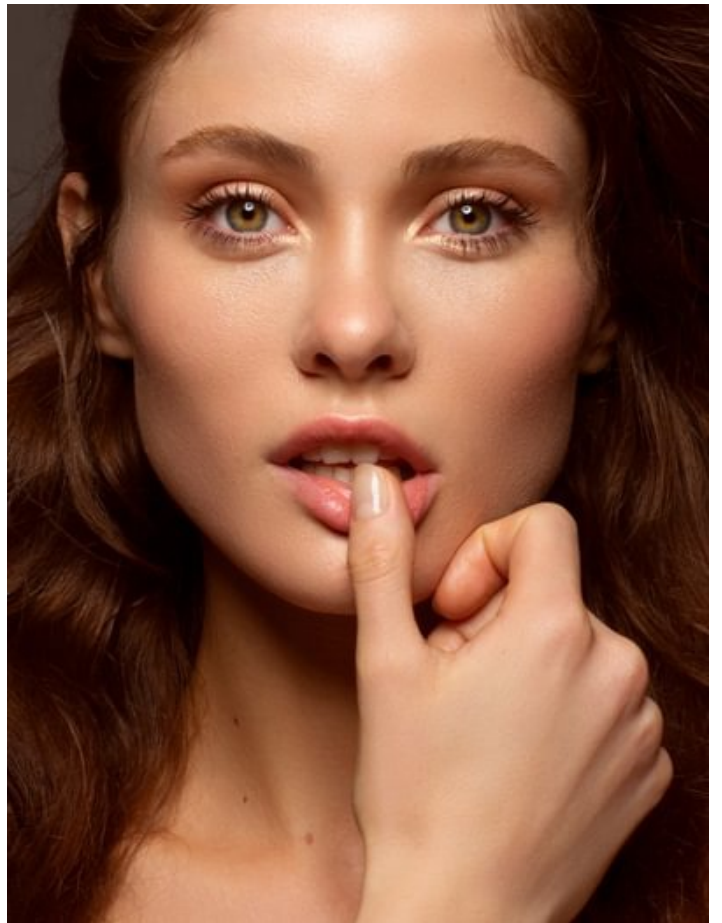




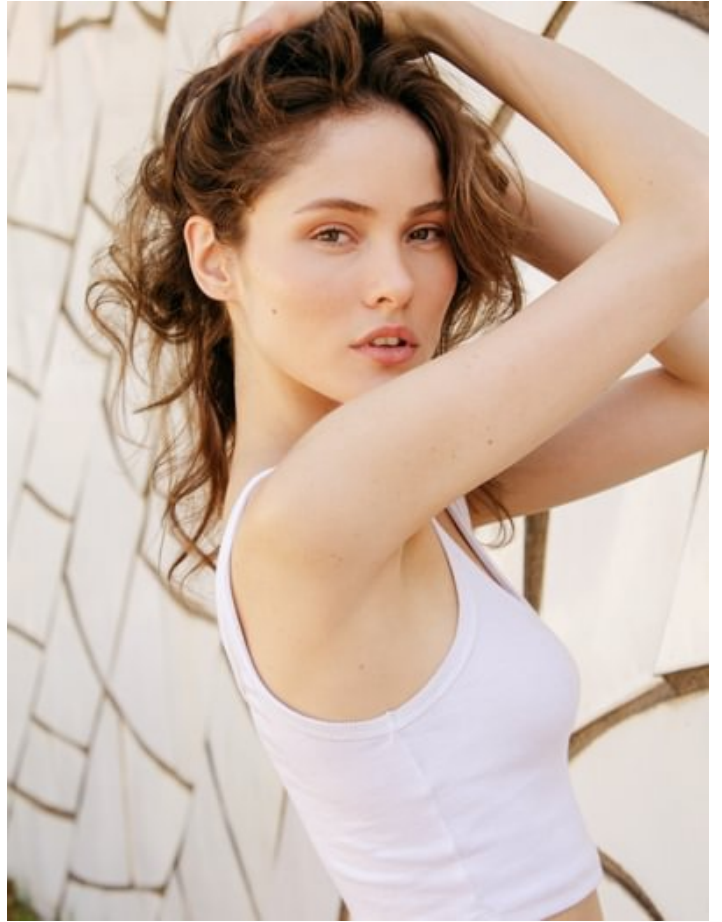


NEW SKIN

PHOTO: JOSÉ LLUIS TABUENA STYLING: EVA BARRALLO HAIR: SIRA LEBÓN



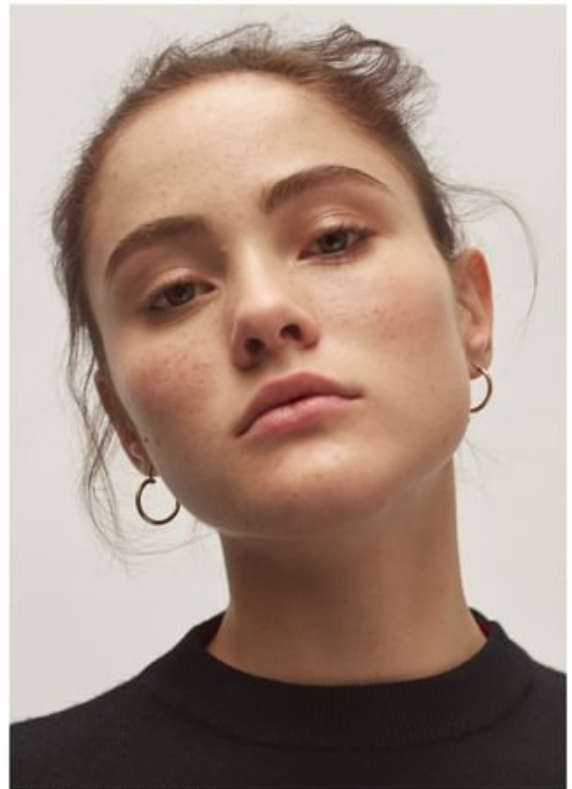








Top by CHRISTOPHER KANE, styling by LOUISE DAMAS



Top by SONIA RYKIEL, styling by LOUISE DAMAS

